

City Bus Surveillance Solution

Safety Issues During Operation

Irregular driving: over-speeding, rapid acceleration/deceleration, sharp turn and other acts which seriously affect the safety of passengers.

Unusual event: open the door while driving; the back door clips passengers; start driving the vehicle before passengers get off, which easily cause accidents.

Emergencies: Extreme behavior such as fire explosion on a bus, which needs complete evidence.

Vehicle breakdown: vehicle breaks down during the operation, which needs to report immediately in order to avoid accidents.

Problems During Daily Operation

Station line: a variety of complex station announcement line such as annular, U-shaped line which need automatic station announcement.

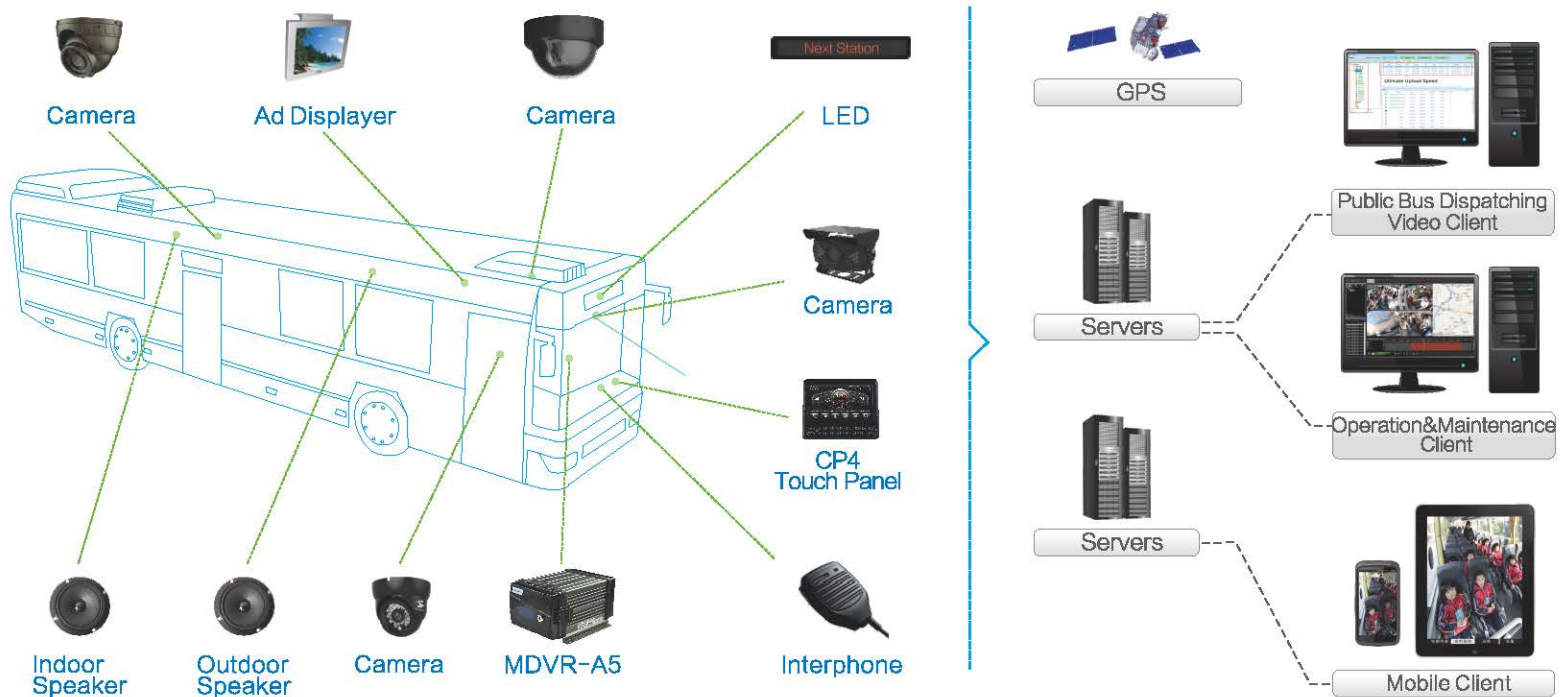
Device maintenance: device replacement, maintenance which takes too long time and affect the normal operation of the vehicle.

Video review: HD image is needed to get evidence.

Convenient scheduling: complex and cumbersome vehicle scheduling is less convenient than one key switch line.

Scientific scheduling: scientific analysis technology can make dispatch more reasonable.

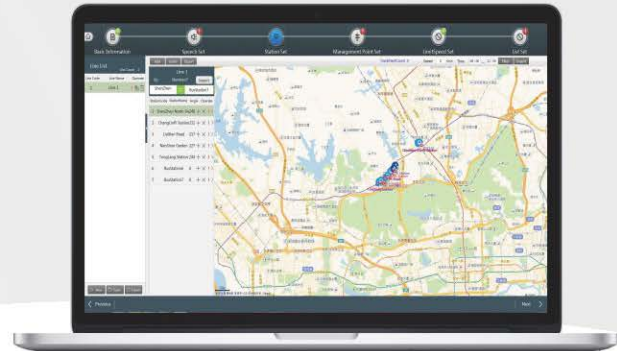
System Diagram



Features



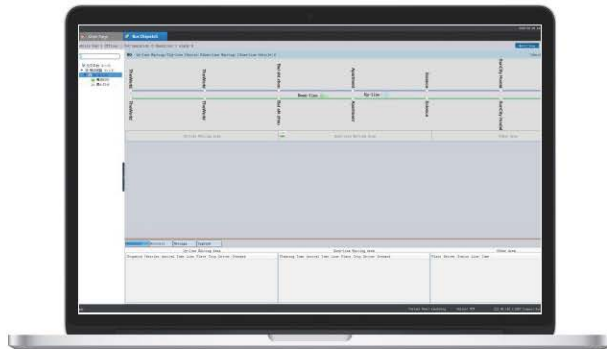
- Multiple-Line Station Announcement



- Spot Data Collection



- Public Bus Dispatching Platform



- Bus Lane Enforcement 

